

SHARE:

[Join Our Email List](#)



# SENGVine

*Nurturing Brilliance, Cultivating Community*

**February  
2025**

## In this **Multiplicity** Issue:

Director's Corner  
SENG Featured Article  
Conference Updates  
SENG Events  
SENG Highlights  
SENG in the Community  
SENG Partners/Sponsorship

---

### Director's Corner

#### **Supporting and Strengthening Gifted Communities**

By Rianne van de Ven  
Member of Board of Directors

[Click here to read](#)



---

### SENG Featured Article

#### **5 Parenting Pitfalls to Avoid When Raising Gifted and Twice- Exceptional Children**

By Sarah Strouthopoulos

Parenting a gifted or twice exceptional (2e) child is a unique and rewarding journey, but it can also be filled with unexpected challenges. These children often possess a complex blend of advanced cognitive abilities, intense emotions, and heightened sensitivities that require a different approach than traditional parenting methods.



[Read More...](#)

---

[Click here](#) to review the guidelines for SENG articles and to submit a proposal.

---

[Access the SENG Library here](#), including newly translated articles

---



## New Platform and Membership Options:

We are moving to a new platform! In order to have continued access to membership benefits, including the monthly SENGvine, current library articles, and discounts on our high-quality programming, **you will need to sign up for a new membership.**

[Click here for membership options](#)

---

---

## Conference Updates!

### 2025 SENG Annual Community Conference & Retreat

*July 24-25 - Alexandria, VA*

**Blueprints of Brilliance: Unlocking Potential in Mind, Body, and Spirit**



This gathering brings together experts in the field, gifted adults, families, educators, counselors, gifted children and more—all with a shared mission to support and uplift our gifted and 2e community.

- **Early Bird registration is open through March 31st**
- **Vendor Booths and Sponsorships Options are now open**
- **Accepted breakout presenters will notified later this month**  
*-We have some amazing experts eager to share their knowledge!*
- **Children's program posting in March - *Think Invention!***

[Conference Webpage](#)

---

---

## Upcoming SENG Events

[Click here to view full calendar.](#)

### SENGinar: Understanding Social Emotional Learning Through a Cultural Lens

The poster for the February 2025 SENGinar event features a light blue background. On the left is the SENG logo, a circular emblem with two hands shaking and the text 'SENG' at the top and 'EMOTIONAL NEEDS OF THE GIFTED' around the bottom. To the right of the logo, the word 'February' is written in a stylized orange font. Below it, 'SENGinar' is written in large white letters, followed by 'UNDERSTANDING SOCIAL EMOTIONAL LEARNING THROUGH A CULTURAL LENS' in bold blue capital letters. At the bottom left, the text 'Professor and Author, Donna Y. Ford, PhD -' is followed by a paragraph about her credentials. To the right of this text is a circular portrait of a woman with a pink headwrap. At the bottom center, the date 'February 25, 2025 / 7:00PM EST' and the website 'www.sengifted.org' are listed. On the far right, a small circular portrait of a woman is accompanied by the text 'Hosted by SENG President, Denise-Michele Hicks'.

[Details here!](#)

---

### SENG Dallas Meet Up



Join SENG Past President, Lin Lim, Cherin Escher & Melissa Marsh (SCG Trainers), and SENG Executive Director & author Adam Laningham to connect, share, and build community.

Feb 21, 2025, 6:00 PM – 8:30 PM PST  
Flower Child, 5959 Royal Ln, Dallas, TX

[More Details](#)

---

### SCG Facilitator Community of Practice Gathering





Feb 19, 2025, 5:00 PM – 6:30 PM PST (Via Zoom)

[More Details](#)

SENG Community Groups:

[Current and Upcoming SCG Groups](#)

[SCG Facilitator Training](#)

More SENG Highlights

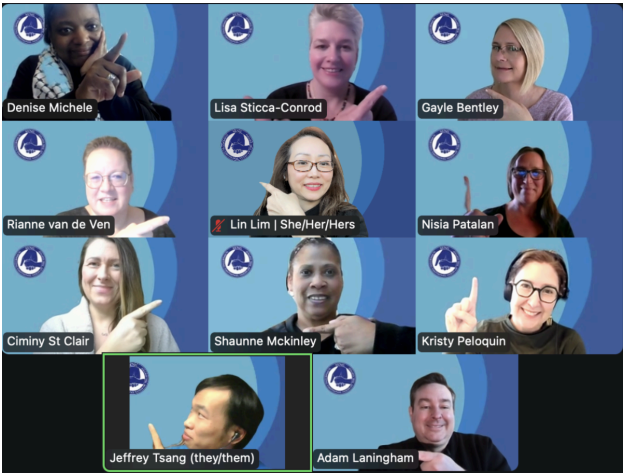
All of our recorded programs are available for streaming on the SENG Vimeo On Demand Store.

[SENG VIMEO On Demand](#)



SENG in the Community

**SENG Weekend of Service**  
Our Board of Directors met in January to share updates, set goals, and plan for continued growth in 2025. We are excited to share new SCG groups, conference plans, and added resources with our SENG community!



SENG Mental Health Professionals Listing

If you are a licensed mental health provider and would like to be added to our resource list, submit your information using the link below.  
The updated list will be posted this spring.

*More information coming soon on opportunities for educational consultants to join our new SENG Educational Consultant List posting this fall!*

[Click here to submit mental health provider contact info](#)

## PARTNER WITH SENG

SENG seeks to engage with like-minded organizations that share our mission and values both nationally and globally. These collaborations enable us to more effectively guide gifted and talented individuals in their personal and academic journeys, helping them thrive intellectually, physically, emotionally, socially, and spiritually.

[Learn more about sponsorship here.](#)



***SENG is a nonprofit organization that empowers gifted and twice-exceptional people to accept our whole being, feel balanced, happy, and at peace, allowing for fulfillment in life.***

## FOLLOW US ON SOCIAL MEDIA



SENG - Supporting Emotional Needs of the Gifted | P.O. Box 972 | Clifton Park , NY 12065 US

[Unsubscribe](#) | [Update Profile](#) | [Constant Contact Data Notice](#)



Try email marketing for free today!